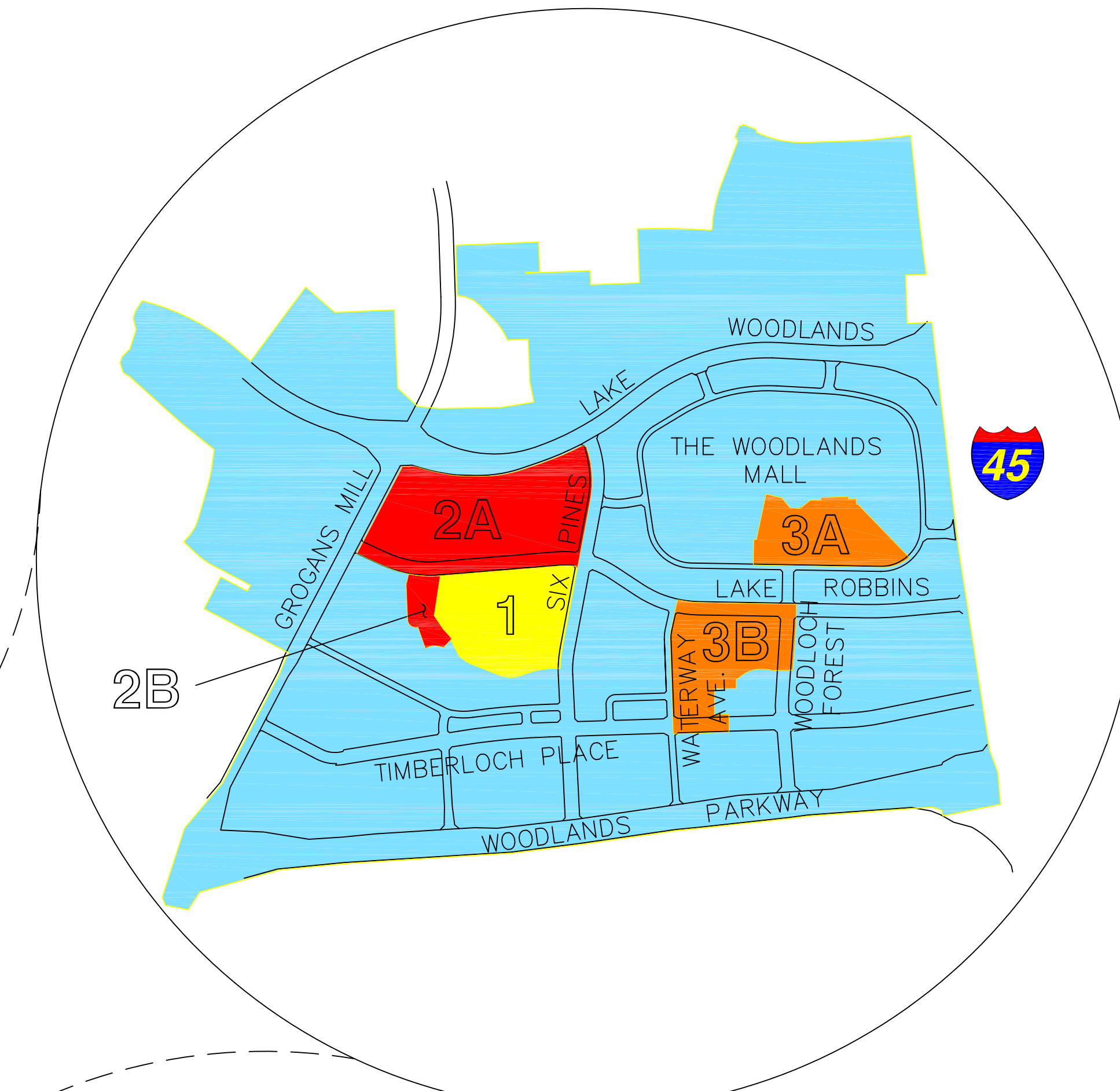
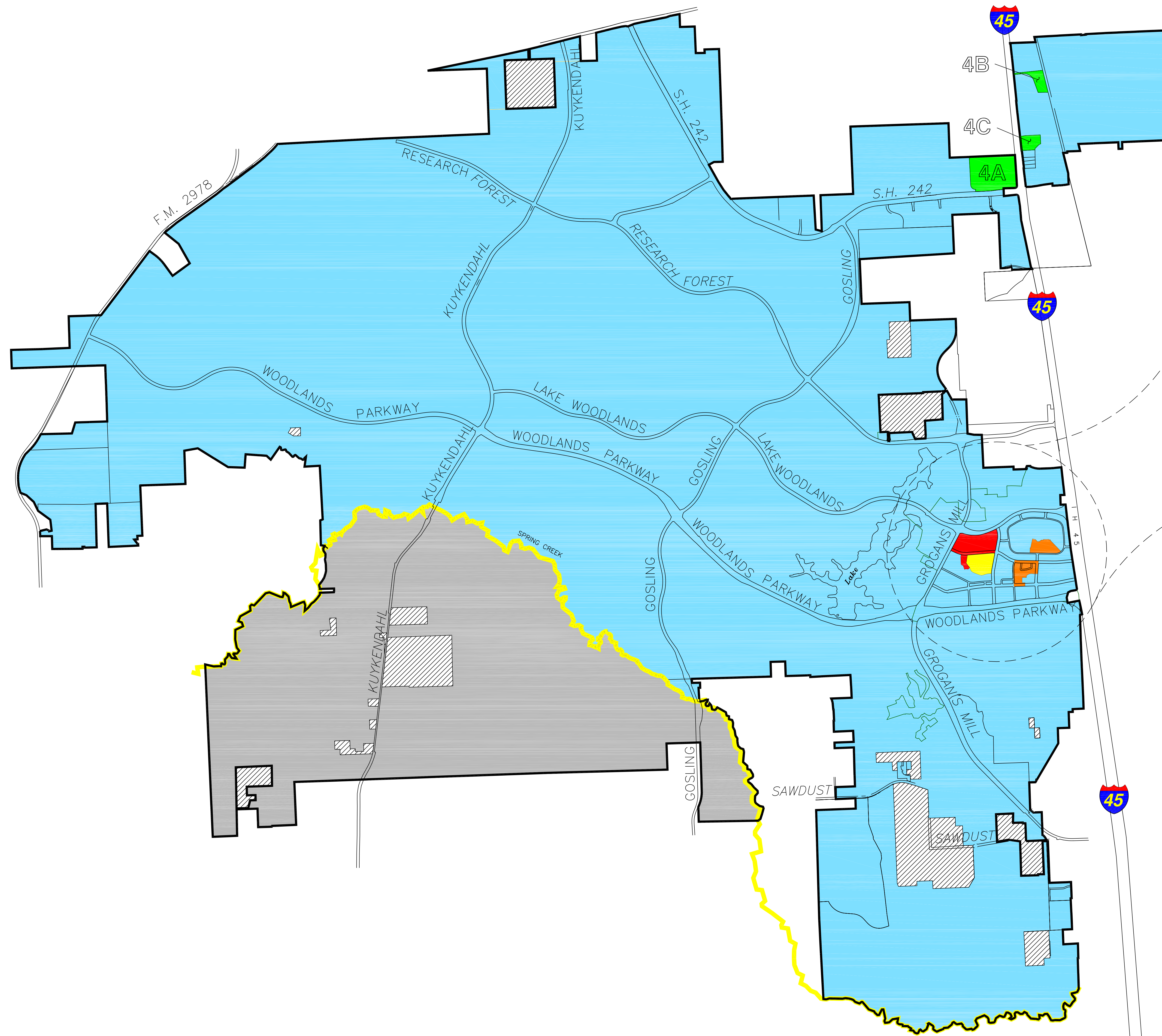


THE WOODLANDS TOWNSHIP



KEY - TOTAL SALES TAX RATE IS 8.25%

6.25% STATE OF TEXAS - ENTIRE MAP
 1.00% THE WOODLANDS TOWNSHIP (CODE 5170503) - ENTIRE MAP
 1.00% OTHER 1% - SEE COLOR KEY BELOW
 8.25% TOTAL SALES TAX RATE FOR ENTIRE MAP

- MONTGOMERY COUNTY**
- 1% THE WOODLANDS TOWNSHIP E.D.Z. (CODE 5170629)
 - 1% E.D.P. No. 1 - CWMP (CODE 5170521)
 - 1% E.D.P. No. 2A - MARKET STREET } (CODE 5170530)
 E.D.P. No. 2B - TOWN GREEN PARK }
 - 1% E.D.P. No. 3A - THE WOODLANDS MALL EXPANSION } (CODE 5170549)
 E.D.P. No. 3B - WATERWAY SQUARE PARK & OFFICE/RETAIL }
 - 1% E.D.P. No. 4A - SHOPPING CENTER } (CODE 5170601)
 E.D.P. No. 4B - FIRE TRAINING FACILITY }
 E.D.P. No. 4C - "FUTURE" RETAIL SITE }
- HARRIS COUNTY**
- 1% HOUSTON METROPOLITAN TRANSIT AUTHORITY (MTA)
- OUT TRACTS
- E.D.Z. = ECONOMIC DEVELOPMENT ZONE
 E.D.P. = ECONOMIC DEVELOPMENT PROJECT

THE WOODLANDS TOWNSHIP

PLEASE NOTE: TOTAL SALES TAX RATE FOR THE ENTIRE MAP IS 8.25%
 SEE KEY FOR LOCAL SALES TAX BREAKDOWN

NO.	DATE	DESCRIPTION	BY
1.	5/2/2008	RESIZED STREET NAMES; ADDED 45 SYMBOL; REVISED EDZ TO EDP	RF

S & V SURVEYING, INC.
 PROFESSIONAL LAND SURVEYORS
 20111 KRAHN SPRING, TEXAS 77388
 OFFICE - (281) 353-2570 FAX - (281) 353-2407
 E-MAIL - cs@svsurveying.com

Date: 02/22/2008 Scale: 1"=2000'
 Drawn By: RF Checked By: PG
 Job No.: 83300-000-0-002 Drawing No.: